



Rabbit anti STAT3 (pY705) Polyclonal Antibody

Alternative Name(s): Signal transducer and activator of transcription 3 (STAT3)

Order Information

- **Description:** STAT3 (pY705)
- **Catalogue:** 500-12054
- **Lot:** See label
- **Size:** 100ug/200ul
- **Host:** Rabbit
- **Clone:** nan
- **Application:** IHC(P), WB, IP
- **Reactivity:** Hu, Ms

ANTIGEN PREPARATION

A synthetic peptide surrounding to the epitope -APYLK-- with phosphorylation sites at Tyr705 of STAT3 protein from human, mouse, rat, chicken dog and bovine origins.

BACKGROUND

STAT proteins (Signal transducer and activator of transcription) belong to a family of cytoplasmic transcription factors that can be phosphorylated by a ligand binding to its cell surface receptor. The phosphorylation of STAT3 induces STAT dimerization, nuclear translocation and DNA binding. Stat3 is constitutively activated in a number of human tumors. Stat3-activated transcription seems to be regulated by serine phosphorylation at Ser727 and tyrosine phosphorylation at Tyr705.

PURIFICATION

The Rabbit IgG is purified by site-modified Epitope Affinity Purification.

FORMULATION

This affinity purified antibody is supplied in sterile Tris-buffered saline (pH7.2) containing antibody stabilizer

SPECIFICITY

This antibody recognizes STAT3 (pY705) with a phosphorylated sites of Tyr705. It does not cross-react with non-phosphospecific peptide.

STORAGE

The antibodies are stable for 24 months from date of receipt when stored at -20oC to -70oC. The antibodies can be stored at 2oC-8oC for three month without detectable loss of activity. Avoid repeated freezing-thawing cycles.

APPLICATIONS/SUGGESTED WORKING DILUTIONS*

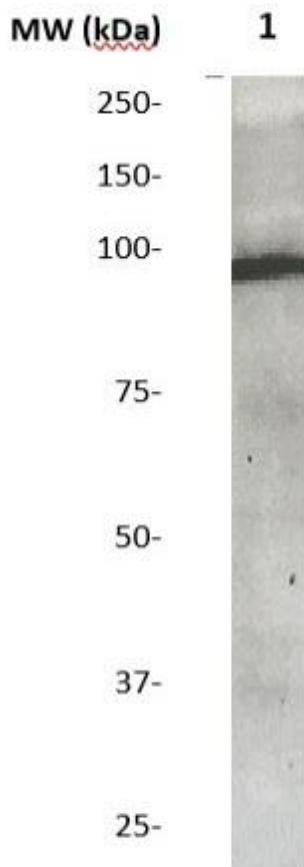
- Western Blot: 0.1-1 µg/ml
- ELISA: nan
- Immunoprecipitation: 2-5 µg/ml
- IHC: 2-10 µg/ml
- Flow cytometry: Not tested
- Molecular Weight: 94.0
- Positive Control: Kidney Tissue
- Cellular Location: Cell Membrane

*Optimal dilutions should be determined by researchers for the specific applications.

FOR RESEARCH USE ONLY.

AbboMax, Inc 2528 Qume Drive, Suite 8, San Jose, California 95131, USA
1 408-573-1898 (Tel). 1 408-573-1858 (Fax). www.abbomax.com info@abbomax.com

DATA ATTACHMENTS



Western Blot: The whole cell lysate derived from A431 with EGF stimulated was immunoblotted by Rabbit anti STAT3 (pY705) (Cat#500-12054) antibody at 1:500. Observed a major immunoreactive band at molecular weight ~94 kDa.

REFERENCES

FOR RESEARCH USE ONLY.

AbboMax, Inc 2528 Qume Drive, Suite 8, San Jose, California 95131, USA
1 408-573-1898 (Tel). 1 408-573-1858 (Fax). www.abbomax.com info@abbomax.com